

WATERLINE - Lèvtèt

Details

- **Type** : Waterline.
- **Nickname** : Lèvtèt.
- **Place** : Reunion Island, Saint Joseph, Langevin river, Jules Bay.
- **Length** : 22m
- **Hight** : 1.5m
- **GPS (line)** : -21.35356, 55.6478
- **Upstream side access** : **EASY**
- **Downstream side access** : **EASY**
- **No hiking.**
- **IGN Map at 25000th 4406RT La Fournaise.**
- **6 "standard" lunules Ø12mm (line, backup).**
- **1 "0" lunule Ø12mm (line).**
- **1 "I" lunule Ø12mm (backup).**
- **Period** : Summer, from December to May, or after floods.



Probably the most beautiful waterline of the island! In addition to this, it is easier to access, unthinkable!

Always in the Langevin river, this pond exist (or is viable) only during heavy rains, thus more accessible in summer.

The site is just beautiful, like something out of a novel, or of the heart of the Amazon forest ... Waterfall, translucent turquoise water, flourishing vegetation, huge arch overlooking the site, no siphon, perfect rock, no pollution ... In short, everything to like.

Defects?

A very small window for the sun (11:00 a.m. – 02:00 p.m. in summer, 00:30 p.m. – 01:30 p.m. in winter) and the OBLIGATION to wear a helmet (cliff above).

Tension and equalization

- Tension downstream side with double pulleys, lashing or equivalent.
- Equalization with, 8m (tension) and 4m (backup) of rope upstream side, as well as with 22m (tension) and 10m (backup) of rope downstream side.

Remarks

- **Warning: spot considered identical as a canyon, thus the same canyoning safety rules must be applied.**
- **Helmet required!**
- Backup your line!
- Dyneema rope recommended for downstream side.
- Very small window for the sun.
- Take care of the place, do not let your waste!

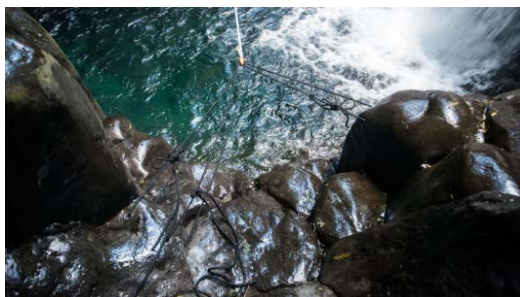
Site access

- **From the North** : Take the RN4 to Saint-Pierre, then take the exit for Saint Joseph. Once on the RN2, continue to Saint Joseph, pass the bridge of the "Rivière des Remparts" and drive over 3.5km. Cross the bridge of the "Rivière Langevin", then take the first left, just after the "balance canne à sucre" on the "Rue de La Passerelle".
 - **From the south** : From the RN2, pass Vincenzo and head towards Saint Joseph. Just before the bridge of the "Rivière Langevin", turn right and go on the "Rue de La Passerelle", just before the "balance canne à sucre".
- Follow the road for 3.5 km, cross the first bridge and park just after the small parking alongside a shrine. Go back up the river for 50m, cross the river, and just swim to install the line.

Credits

- **Lunules (August 2016), texts, sketches, pictures** :
BK (<https://www.facebook.com/kevin.borg.9>)
- Additional informations for the line:
<http://www.slackline974.org/levtet/>

Anchor access



Upstream side access : Once at the pond, swim to the waterfall, lunules are on the natural steps to the right of the waterfall.

Ø12mm : 2 "standard" lunules for the ligne, 1 "standard" lunule for the backup.

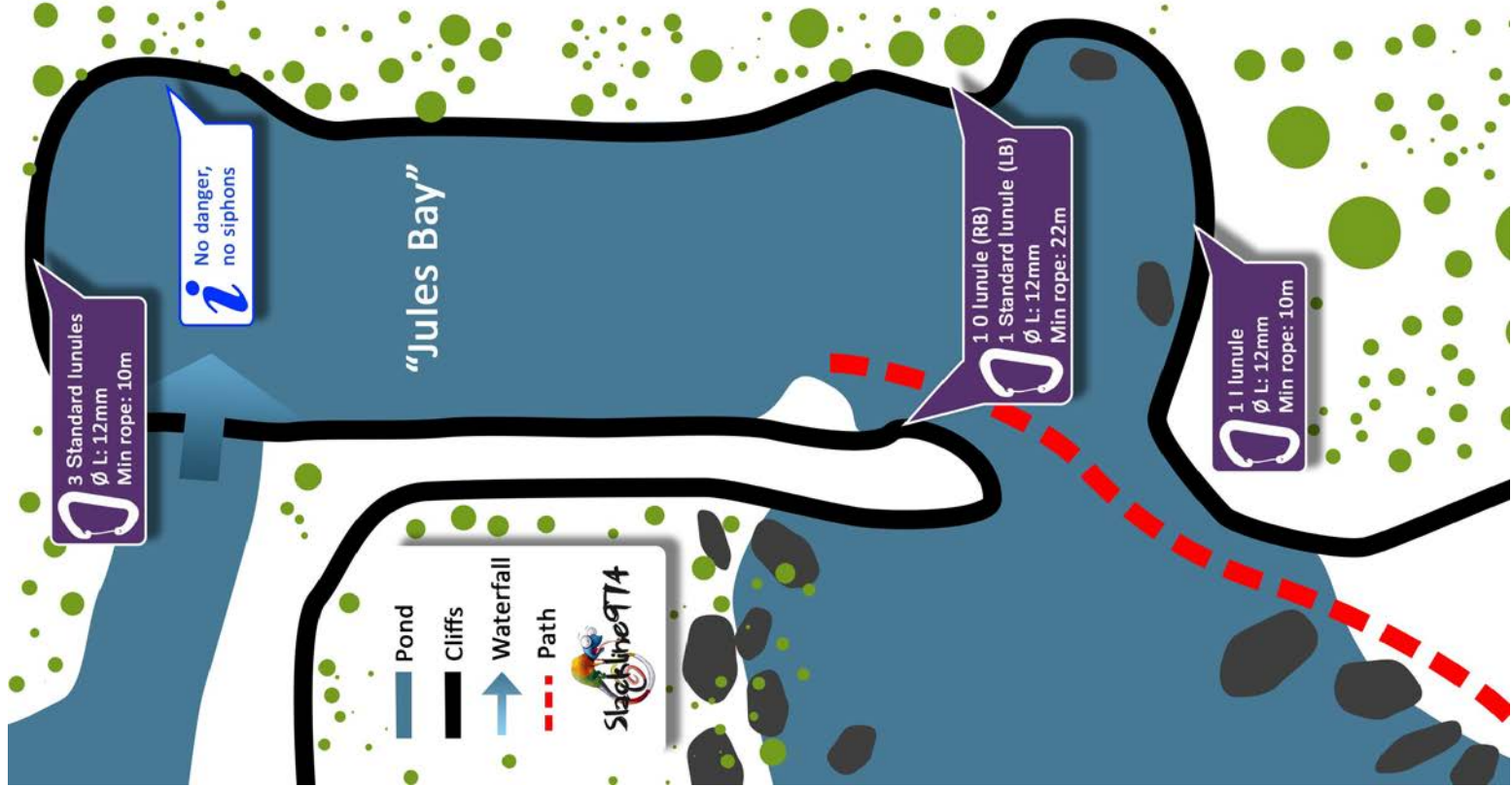


Downstream side access : Arrived at the pond, the lunules are at head height in early cliff in RB and on the horizontal rounded block in LB. The backup is in the line axis at the same height on the downstream cliff.

Ø12mm : 1 "0" lunule (RB) and 1 "standard" lunule (LB) for the line, 1 "I" lunule for the backup.



WATERLINE - Levtet



Passerelle
Îlet à Diable
Pont Babet
Us. hydroélectr.
Usine ruinée
Rivière des Remparts
la Croisée
Jean Petit les Bas
Bois Noirs les Jacques
Vincendo
Piton Langevin ou Piton Lambert
le Plateau
Langevin
le Goyave
le Butor
ST-JOSEPH
Pointe

Exit the RB of the road, then go back up the river about on 75m. That's all!

After the first bridge, a mini car park will be present (facing a candle).